

# Lab 3: Peripheral Circulation and The Dive Response

Marguerite Butler

2024-09-10

## Table of contents

<b>Before Lab</b>	<b>2</b>
<b>General Background: Blood pressure and peripheral circulation</b>	<b>3</b>
Blood pressure varies across species . . . . .	3
Blood pressure varies during the cardiac cycle. .	3
Blood pressure varies along the vascular circuit. .	4
Circulation can be adjusted situationally. . . . .	5
Equipment . . . . .	6
<b>Exercise 1: Measuring Blood Pressure</b>	<b>6</b>
Setup . . . . .	7
Data Collection . . . . .	7
Questions for thought... . . . .	7
<b>Exercise 2: Exploring Peripheral Circulation</b>	<b>8</b>
Objectives . . . . .	8
Procedure . . . . .	8
Notes . . . . .	9
Analysis . . . . .	9
Questions for thought... . . . .	9
<b>Exercise 3: The Dive Response</b>	<b>9</b>
Objectives . . . . .	10
Additional Required Equipment . . . . .	10

A. Set up and testing . . . . .	11
B. Baseline experiment . . . . .	14
C. Dive response experiment . . . . .	14
C. Breath holding experiment . . . . .	15
D. Additional Experiment . . . . .	16
Analysis . . . . .	16
Change in Heart Rate and Pulse Amplitude . . .	16
Change in Peripheral Circulation . . . . .	17
Questions for thought . . . . .	18
<b>After Lab: Assignment Week 3:</b>	<b>19</b>

## Before Lab

### **i** Prepare for lab by:

- Watch Peripheral Circulation Podcast.
- Read [Protocol 2] on measuring blood pressure.
- Read the lab manual below.
- Write the [Prelab] in your lab notebook. For the introduction, focus on the hypotheses you are asked to develop on peripheral circulation and the dive response. Select only the relevant background you need for those hypotheses.
- Do Quiz on Laulima (open 24 hrs before lab).

<https://youtu.be/h47oQH-w6F8>

### **i** Exercises

- Measuring blood pressure
- Peripheral circulation experiment
  - Develop a simple experiment to demonstrate a principle of peripheral circulation of choice.
- Dive response experiment
  - Develop a hypothesis for a potential trigger for

the dive response.

## General Background: Blood pressure and peripheral circulation

Vertebrates have a **closed circulatory system** where the blood is always enclosed within blood vessels or the heart. Blood is pumped from the **heart** (the central pump) to the **vasculature**: the **arteries**, **capillary beds** (sites of delivery to tissues), **the veins**, and back to heart. There are several important consequences of this design: (1) blood pressure varies across species according to oxygen demand and morphology (especially animal height), (2) **blood pressure varies along the circuit**, (3) **blood pressure can be regulated at points along the circuit**, and (4) **blood pressure can be modified situationally** depending the state of the animal.

### Blood pressure varies across species

For **very active** animals (e.g., mammals and birds) or **very large animals** (especially very tall animals that have more gravity to resist), the ability to regulate blood pressure is critical — active animals will *need more oxygen delivered at a faster rate*, especially to the most metabolically active tissues, and *larger animals will require much more pressure* to reach all of their tissues.

### Blood pressure varies during the cardiac cycle.

The **cardiac cycle** is a complete cycle of the heart beat, comprised of **systole** (Figure 1; the phase involving contraction and ejection) and **diastole** (Figure 2; relaxation and filling) of the atria and ventricles. We will learn more about the cardiac cycle in the EKG lab. In this lab we are focusing on the blood pressure changes. The largest muscles of the heart are in the **ventricles**. Blood pressure is at its highest immediately after

the ventricles contract to push blood into the arterial system (Figure 3; **systolic pressure**) and declines as the ventricles relax to fill with blood before pumping again. Just before the ventricles contract, blood pressure is at its lowest (**diastolic pressure**).

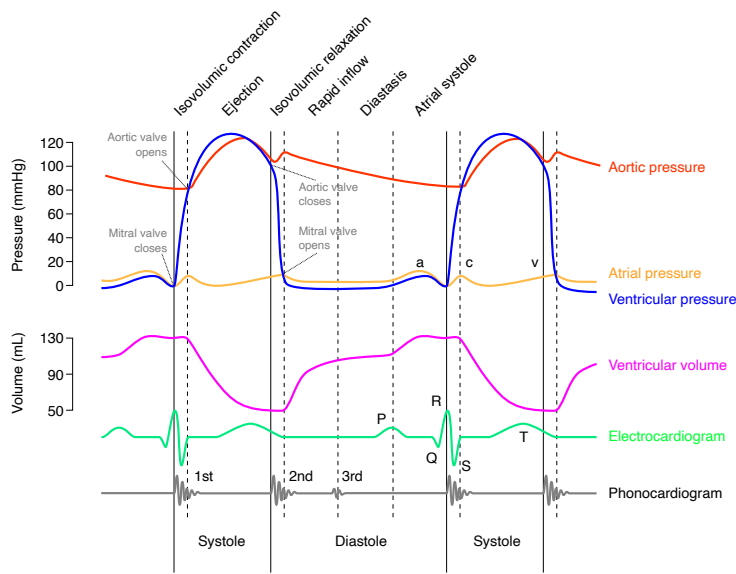


Figure 3: Volume and pressure changes during the **cardiac cycle**, as shown in a Wiggers diagram. Note that aortic and ventricular pressures are both lowest at the end of diastole, just before the beginning of systole. adh30 revised work by DanielChangMD who revised original work of DestinyQx; Redrawn as SVG by xavax, [Wiggers Diagram 2](#), CC BY-SA 4.0

### Blood pressure varies along the vascular circuit.

Blood in the arteries leaving the heart is always at very high pressure as compared to the low pressure in the veins in the legs or the even lower pressure in capillary beds at the tissues. Blood pressure drops as the blood vessels branch again and again, increasing the cross-sectional area of the circuit, until it reaches the capillaries where the tissues experience relatively constant, low pressure to facilitate **diffusion**.

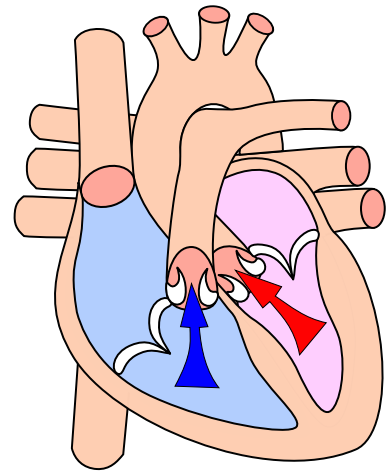


Figure 1: The human heart during the ventricular **systole** phase of the **cardiac cycle**. Image by [Wapcaplet](#), [Reytan](#), [Mtcv](#) / [Heart systole/CC BY-SA 3.0](#)

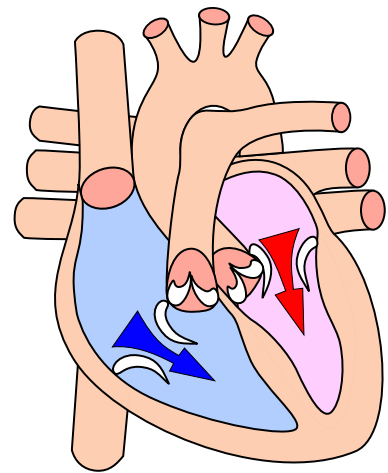


Figure 2: The heart relaxes and the ventricles fill during the **diastole** phase of the **cardiac cycle**. Image by [Wapcaplet](#), [Reytan](#), [Vector:Sjef](#) / [Heart diastole/ CC BY-SA 3.0](#)

The slow blood flow at the capillaries facilitates diffusion of oxygen, nutrients, and carbon dioxide and other wastes between the blood and the tissues that are bathed by the capillaries. Therefore, **pressure varies** depending on **distance from the heart**, the **cross-sectional area of the blood vessels**, as well as **gravity**. However, at any given point along the circuit, blood pressure remains fairly constant.

### **Circulation can be adjusted situationally.**

At most times, blood pressure is regulated to **maintain a relatively constant pressure**, however, there are times when **circulation needs to be adjusted**.

A well-known example is the **Fight-or-Flight response**, which occurs, for example, when an animal sees a predator or anticipates a fight. The **sympathetic nervous system** dominates and causes a ramp-up of circulation to deliver more energy to the skeletal muscles: increased **cardiac output** (= **heart rate x stroke volume**) and **blood pressure**, and increased blood flow to the lungs and skeletal muscles. In contrast, the **rest-and-digest** response occurs after an animal has had a large meal. The **parasympathetic nervous system** dominates, lowering heart rate, concentrates blood flow to the gut, and promotes a resting state.

A famous circulatory adjustment to the distribution of blood flow is the **dive response** of air breathing vertebrates (pp. 721-723, Withers 1992). We will explore this response in this lab. The dive response is characterized by a **diving bradycardia** (slowing of the heart rate) and **peripheral vasoconstriction** which drives the blood away from the extremities and toward the central organs (brain, heart). The diving bradycardia is a reflexive response that can cause a dramatic drop in heart rate but does not necessarily cause a drop in blood pressure because there is a simultaneous peripheral vasoconstriction. With more blood returned to the heart, you may see an increase in stroke volume, and no change or even a rise in blood pressure.

As we can see from these examples, adjustments to blood flow are not simply an adjustment of heart function, but also **constriction or relaxation of the vasculature** (blood vessels:

arteries, veins, capillaries). **Constricting blood vessels** will reduce their **cross-sectional area** and **increase blood pressure and flow**.

Local changes in circulation are under both **nervous** and **hormonal** control. Regulation of blood flow in the vertebrate circulatory system occurs by three primary mechanisms: 1) **local receptors** (*nervous system*) to detect levels of metabolic activity (e.g., carbon dioxide receptors), 2) **sympathetic** and **parasympathetic** (*autonomic nervous system*) control of the vasculature including capillary beds at the tissues, and 3) **endocrine** (*hormonal*) control of the vasculature.

In this lab, we will measure blood pressure of volunteers using a finger pulse transducer, a stethoscope, a blood pressure cuff (sphygmomanometer), and changes in peripheral circulation by measuring the volume of the extremities using a respiratory belt with a force transducer. We will do a series of learning exercises and then conduct an experiment on factors affecting peripheral circulation and as well as during simulated dives (the dive response).

## Equipment

- PowerLab data acquisition system
- Finger pulse transducer
- Stethoscope
- Blood pressure cuff
- Blood pressure gauge (sphygmomanometer) with pod or BNC port
- Respiratory belt transducer
- LabChart software, note Blood Pressure settings

## Exercise 1: Measuring Blood Pressure

Traditionally, systemic arterial blood pressure is measured using a **stethoscope** and a **blood pressure cuff** connected to

a blood pressure gauge called a **sphygmomanometer** (*sss-fig-no-ma-nom-eter*). The sphygmomanometer is calibrated in pressure units of mmHg (millimeters of mercury). Modern instruments use compressed air as a hydraulic fluid to transmit the force of your pulsing blood.

Refer to [Protocol 2.1 and 2.2] for how to measure blood pressure.

## Setup

1. Use “Lab 3-Blood Pressure” settings to start Chart software.
2. Check the channel settings: from the menu bar **Setup > Channel Settings**. Is Pulse Flow on Input 1 or 2?
3. Attach Finger Pulse transducer.
4. Attach sphygmomanometer transducer.
5. Restart the LabChart software with the transducers attached to the correct inputs.

## Data Collection

1. Measure blood pressure on a human volunteer using **auscultation** (listening through a stethoscope) and a **sphygmomanometer**.
2. Measure blood pressure using the PowerLab system and LabChart. Check that the **channel settings** are correctly set for each channel.
3. Repeat (1) and (2) on each group member, making sure to comment your data trace.

## Questions for thought...

1. Does the time of the first **Korotkoff sound** (systolic pressure heard through the stethoscope), correspond with the first appearance of blood flow (as measured by the finger pulse)? Why or why not?

2. Would slowing the rate of pressure release from the cuff make your readings of the first appearance of blood flow more accurate? What problems might be caused by slowing pressure release?
3. Does the time that diastolic pressure is heard through the stethoscope correspond with anything particular in the blood flow signal? Can you, therefore, use pulse measurement to replace the stethoscope?
4. How much variation in measurement of diastolic and systolic pressures was observed within and between individuals? What are potential sources of variation in these estimates?

## Exercise 2: Exploring Peripheral Circulation

### Objectives

To demonstrate basic principles of peripheral circulation using blood pressure data from the extremities. What you would expect based on relative distance from the heart and gravity (and whether the location is above or below the heart)?

### Procedure

1. *Brainstorm with your lab group to develop some simple experiments to demonstrate principles of peripheral circulation.* What are some good hypotheses for peripheral blood pressure?
2. What are some good locations to measure (or other simple manipulations) for comparison? Make sure you place the stethoscope on a major artery or vein such as the radial artery on the forearm, or the small saphenous vein on the calf. Ask for help if you don't know where they are. Be specific when you write up your methods or we will not understand what you did.
3. For each experiment, **determine both systolic and diastolic blood pressure.**



## Notes

1. If needed, recalibrate the blood pressure force transducer after each time you move the cuff.
2. Place the instruments directly on the skin (not through clothes).
3. If measuring from foot, please wash toe before attaching pulse transducer to prevent any fungal contamination.
4. **Always Release the cuff pressure *completely* as soon as you are done taking data**

## Analysis

Compare systolic and diastolic pressure for each of your treatments versus an appropriate baseline. Think carefully about appropriate baselines for your ideas to achieve the best test of your hypotheses.

## Questions for thought...

1. How much does blood pressure change for each treatment? What could explain it? Does it seem reasonable?
2. How much variation is there among members of your group? What are sources of variation in these estimates?

## Exercise 3: The Dive Response

When an air-breathing animal dives, it voluntarily holds its breath while the tissues continue to use oxygen. The **dive response** is a reflexive response that reorganizes circulation to maintain blood flow to the most essential organs – the brain, eyes, and myocardium (heart muscle), while reducing blood flow to the peripheral tissues including musculature of the limbs and thorax, lungs, and renal system. Remarkably, all vertebrates have a dive response. The responses vary greatly between taxa, with some of the most pronounced being in whales and diving seals.

Primary features of the human **dive response** are the rapid onset of **bradycardia** (slowing of the *heart rate*), which works together with **peripheral vasoconstriction** to shunt blood toward the body's core (Withers 1992). This causes an increase in the volume of blood returning to the **heart** and an increase in **stroke volume**. Thus, although there is a drop in *heart rate*, there may be no change or even an increase in **arterial blood pressure**.

The dive response is thought to be adaptive for either reducing heat loss and/or preserving circulation around the vital organs while reducing circulation to the peripheral tissues. Oxygen becomes depleted and carbon dioxide and lactate build up in the tissues during a dive. When the animal resurfaces, there is a recovery period characterized by more rapid heart rate and ventilation to absorb more oxygen and flush out lactate and carbon dioxide.

The dive response is triggered by sudden submergence of the face in cold water, which stimulates the *trigeminal nerve receptors* around the face. Stimulation is enhanced with colder temperature, which inhibits the cardiovascular center, as well as increasing parasympathetic output and reducing sympathetic output, both of which reduce heart rate.

## Objectives

You will investigate the effects of the diving response on heart rate and peripheral circulation in humans during simulated dives. First, you will examine the effect of holding your breath, then you will examine the effects of simulated dives, and an experiment to determine which environmental stimuli contribute to triggering the dive response. One person will serve as the experimental subject.

## Additional Required Equipment

- Respiratory Belt Transducer
- Wash basin, Ice, Thermometer
- Duct tape

- Use the Dive settings file

## A. Set up and testing

1. Attach the respiratory belt transducer to Input 1, and the pulse transducer to Input 2.
  2. Use “Lab 3-Dive Response...” settings to start Chart software.
  3. Add 2 channels for Pulse Flow and Heart Rate.
- From the menu bar, choose **Setup > Channel Settings**. At the bottom of the menu, increase the number of channels to 3.
  - If you attached the pulse transducer before you opened the software, it should detect the pulse transducer and say so in the Input Amplifier column. If not, quit the software and reopen it via the settings file now that all the sensors are attached.
  - Name channel 2 “Pulse Flow”. In the box that pops up change the source to Channel 2 (to match the sensor input). Under Calculation, select Integral, (the default Standard Integral) and OK. This will tell us the relative volume of blood flowing through our pulse.
  - Name channel 3 “Heart Rate (BPM)”. Select Calculation > Cyclic Measurements. Change the source to Channel 2 (calculating from the pulse transducer data), and ensure Measurement is set to Rate.
  - *In this experiment, the sphygmomanometer is attached to a thigh cuff and used only to restrict blood flow to the thigh and not plugged in to PowerLab.*
4. Set up and maintain a wash basin with icewater deep enough to submerge your face up to your temples. Use a thermometer to monitor temperature at 10-15C (50-60F), replenish with ice as needed.
  5. Attach the respiratory belt snugly to the calf (Figure 4). *It should feel tight and the sensor fabric should be slightly stretched.*



Figure 4: Attachment of the respiratory belt transducer to the calf for leg volume measurement.

6. Place the thigh cuff around the subject's thigh. You may or many not need to use *duct tape if the cuff does not remain securely pressurized to restrict blood flow*. If needed, apply tape to *secure both the top and the bottom* of the cuff.
7. Record for 10 seconds and stop. Scale the Pulse channel and the Leg Volume channel to fully display the data.
8. Record again and test by flexing and relaxing your calf. *You should be able to see a clear deflection on the leg volume channel*. If it is very small, try tightening the respiratory belt a little. Check with your TA that you are receiving a good signal before moving on.
9. For all experiments, *resting position for the subject is sitting while leaning over the basin with the face just above water*.
10. Use a timer to time the treatments (a cell phone or a web browser will do).
11. You will want to use a compressed timescale to see the dive response. Try 100:1, 200:1, etc.
12. Always fully deflate the cuff (you may have to squeeze out the air) after depressurizing.

**i** The idea behind measuring peripheral circulation using leg volume changes

We can quantify the volume in your peripheral circulation (specifically your lower leg) by assessing **venous pooling** for a standard time interval. By constricting blood flow to the lower limb, we will prevent venous return of the blood. Because the veins have little smooth muscle, it is relatively easy to stop venous return.

#### **💡** Protocol: Basic Leg volume measurement

You will use the sphygmomanometer cuff to cut off circulation in the leg for 20 sec. at the upper thigh. The respiratory belt transducer senses stretch and can be used to measure **calf volume** (Figure 4) **before, during inflation, and after deflating** the cuff (recovery).

1. Record the subject's **resting** recording for 10 seconds.
2. Rapidly **Inflate** the cuff to **60 mmHg** (or whatever pressure feels tight enough to restrict blood flow for the subject [I used 80 mmHg], the pressure should be same for all measurements),
3. **Hold pressure for exactly 20 seconds** (*NOTE: You may have to gently squeeze the bulb to keep pressure constant.*)
4. **Quickly and COMPLETELY release** the pressure (Figure 5) by ripping off the velcro without moving the subject.
5. **Recovery:** Record for 30 sec or until the leg volume returns to baseline.

#### NOTES:

- Be sure to Comment at the **start of each new treatment** (start of baseline, start of dive response, etc.)
- It is critical to have accurate comments for each manipulation above (resting, inflate, at pressure, release, dive, breathing, etc.)
- *Be sure to have the comments pre-typed in the comment box and hit enter at the start of each event to accurately place comments in time.*
- **Inflate** and **release** the cuff as fast as possible.
- Practice ripping off the cuff without moving the subject. The experimenter should do it.
- When doing *repeated measurements*, ensure you have **baseline data** for *at least 15 sec* before inflating the cuff again.
- The subject will have to hold their breath for about 30 sec.
- Make **good comments** and **minimize movement** in the Finger Pulse Transducer.

## B. Baseline experiment

1. Use the **Section A setup** with the respiratory belt on the calf (Figure 4) and the cuff on the upper thigh.
2. Subject leans over basin with face just above water.
3. Start recording and comment “baseline control experiment, resting”, record for 10sec.
4. Rapidly inflate the cuff to 60mmHg, comment “cuff inflated”, and record for 20sec.
5. Rip off the cuff, releasing pressure, and comment “deflated”. Record for 30 sec or until leg volume and HR stabilizes.

Make sure to **comment at each step** and always **DEFLATE CUFF COMPLETELY** before reapplying the cuff.

## C. Dive response experiment

*Note: It is critical that the face be well submerged up to the temples in order to see the dive response.*

### **i** NOTES:

- **Make sure everything is very clear before beginning** to avoid repeating this experiment.
- It is a good idea to practice a dry run of the simulated dive procedure (without submerging face).
- Work out in advance what your signals will be for resurfacing, or any other signals you need.
- *Do not force the subject to remain submerged.*

1. Use the **Section A setup**. The basin should be in front of the subject and at 10-15C.
2. Before beginning, allow the subject to find a comfortable chair height and leg posture to allow them to sit and *remain as motionless as possible with their face above the basin.*
3. **Simulated dive:**

- a. **Rest:** Start recording and comment “dive experiment, resting”, record for 10 sec
- b. **Rapidly** inflate cuff to 60mmHg, comment “cuff inflated”.
- c. Have the subject take a deep breath, exhale partially, and then hold their breath while immersing their face up to their temples in the pan of water. Comment “dive”, record for 20 sec.
- d. **Rapidly** release all cuff pressure. Comment “deflated”, record for 10 sec.
- e. Signal to the subject to **resurface** and breathe normally with face just above water. Comment “normal breathing” record for at least 10 sec (ok to keep recording through recovery).
- f. Allow subject to gently dry face.

### C. Breath holding experiment

- 1. This experiment is very similar to the dive response, but without facial immersion. The subject will remain motionless with their face above the basin.
- 2. **Breath hold:**
  - a. Record and comment “breath hold experiment, resting”. Record for 10 sec.
  - b. Rapidly inflate cuff to 60mmHg, comment “cuff inflated”.
  - c. Have the subject take a deep breath, exhale partially, and then hold their breath. Comment “breath hold”, record for 20 sec.
  - d. Rapidly release all pressure. Comment “deflated”, and record for 10 sec.
  - e. Signal to the subject to **breathe normally** with face just above water. Comment “normal breathing” and record for 10 sec.

## D. Additional Experiment

The simulated dive involves multiple stimuli simultaneously.

**Brainstorm** how you might *identify the environmental stimuli which are actually “triggering” the dive response by trying to isolate stimuli*. Are these components all necessary? Are they additive?

Each group should **design and perform an experiment to isolate one potential stimulus** responsible for triggering the dive response. Get your idea approved by your TA. Discuss your results with the other groups. *Make sure you explain your methods carefully (including your logic) in your lab report.*

## Analysis

### Change in Heart Rate and Pulse Amplitude

1. First analyze the **Control Experiment** and **Dive Response** data.
2. Open the data in the Chart View and **Autoscale**, if necessary. Change the compression of the data trace so the entire exercise can be viewed at once. Identify the **rest** section of the data and change the compression to find a representative cycle. *You can change the compression and scale as often as required.*
3. Move the **Waveform Cursor** to a representative cycle on the **pulse** channel during **rest**. Collect the values for **heart rate** and **pulse amplitude** at the pulse peak. We can use pulse amplitude as a proxy for **stroke volume**.
4. Collect **heart rate** and **pulse amplitude** for:
  - a. rest
  - b. 15 sec into the dive (a representative pulsewave during dive)
  - c. 10 sec after the end of the dive (recovery)
  - d. Tabulate the data in your notebook (for example see Table 1)



- For the remaining experiments **Post Dive**, **Breath Hold** experiment, and **Your Experiment**, you only need to collect heart rate and pulse amplitude data for the treatment period (pre-treatment and post-treatment not necessary; Table 2)

Table 1: Heart rate and pulse amplitude should be recorded at rest, during the treatment, and during the recovery for each experiment.

Experiment	Parameter	Rest	Treatment	Recovery
Baseline	heart rate (BPM)			
	pulse amplitude (mV)			
Dive	heart rate (BPM)			
	pulse amplitude (mV)			

### Change in Peripheral Circulation

 Collecting leg volume change from the volume trace:

You will collect the relative signal amplitude change when the cuff pressure is released.

- Set the **Marker** to the point of maximum leg volume (a region just prior to cuff deflation in the leg volume channel; Figure 5).
- Using the **Waveform Cursor**, obtain the **difference in leg volume** between maximum and minimum leg volume ( $\Delta LV$  (mV) =  $LV1 - LV2$ ; Figure 5). Note the maximum and minimum should be just before and a little after the cuff is deflated.
- Relative leg volume** is the ratio between the experimental and baseline leg volume differences.  

$$RelLV = \Delta LV_{treatment} / \Delta LV_{baseline}$$

The **leg volume difference** is a measure of pooling and therefore peripheral circulation. **Relative leg volume** quantifies **changes** in *peripheral circulation*.

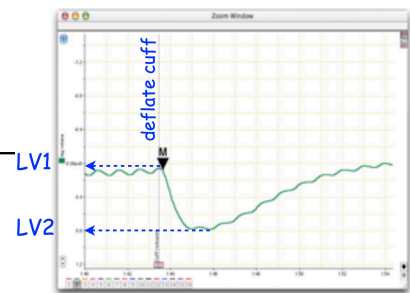


Figure 5: Zoom window view of measuring the leg volume change resulting from a simulated dive using a marker at T1 (30sec of cuff inflation) and the waveform cursor at T2 (maximum leg volume drop after releasing the pressure).

1. Collect the leg volume difference for the **control**, during the **dive**, and **breath hold** (  $\Delta LV_{baseline}$ ,  $\Delta LV_{dive}$ , and  $\Delta LV_{breath_{hold}}$  ) .
2. Calculate the relative leg volumes for dive vs. baseline and dive vs. breath hold (  $\Delta LV_{dive}/\Delta LV_{baseline}$ , etc.
3. Do the same for your **custom experiment** and tabulate as in Table 2.

Table 2: Heart rate (HR), pulse amplitude (PA), and leg volume (LV) data to record in your notebook. These are measurements taken during the “treatment” phase of each experiment. You may use the  $HR_{baseline}$ ,  $PA_{baseline}$ , and  $\Delta LV_{baseline}$  for all of your comparisons if your setup has not changed (i.e., you did not reposition your cuff or your transducers).

	Baseline	Dive	Breath Hold	My Expt
heart rate (BPM)				
pulse amplitude (mv)				
$\Delta LV$ (mV)				
	Dive/Baseline	Breath Hold/Baseline	My Expt/Baseline	
Relative HR				
Relative LV				

### Questions for thought . . .

1. Compare your results of heart rate during breath holding with those from simulated dives. Are they the same?

2. What factors could explain differences between breath holding and a “dive”? Have you eliminated any hypotheses with your experiments?
3. Compare the percent change in heart rate during dives among different people. Is the relative or absolute bradycardia similar?
4. Do your results for leg volume suggest that peripheral circulation changes during a dive? during a breath-hold?
5. Did your peripheral circulation increase or decrease during a “dive”? during a breath hold?
6. What comparisons can you make to dive deeper into your data? Which numbers would you look at?
7. Why do you think the diving response is considered advantageous?

### After Lab: Assignment Week 3:

- Before you leave, please tidy up and leave the equipment (sensors, cables) as you found them. Make sure the Power-Lab is powered down. Leave computers on but do **make a folder for your lab group** on the desktop and *move ALL your FILES into your group's folder*.
- You will work with your lab group to analyze data, and you may share figures if you wish. However, each person will submit an **Individual WorkSheet** [\[html\]](#)
- Reminder: *Practical has been moved to next week (week 4) on Lab 1 material*. Let us know if you want to come in to practice.

Withers, Philip C. 1992. *Comparative Animal Physiology*. Saunders College Publishing.