

# Lab 5: Physiology of the *in situ* Toad Heart

Marguerite Butler

2023-09-16

## Table of contents

<b>Before Lab</b>	<b>1</b>
In Lab: . . . . .	1
After Lab: . . . . .	2

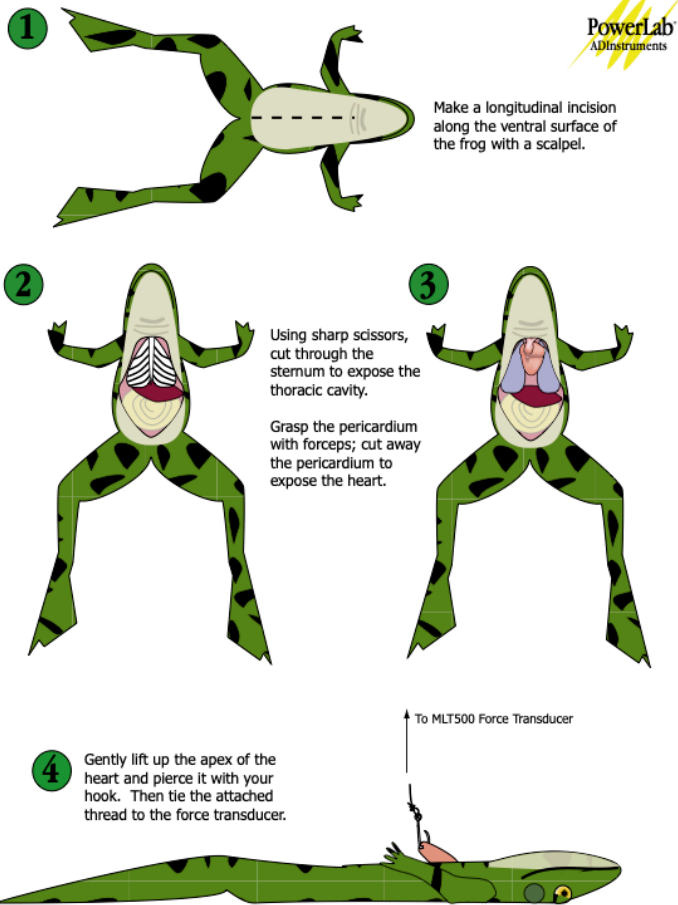
## Before Lab

**i** Prepare for lab by:

- This will be our first dissection lab. It s really cool!
- **Wear shoes to lab**, and bring your dissecting kit (if you have one, otherwise we have supplies). Lab coat is not required but you are welcome to wear one if you wish.
- Read the lab manual for this week s experiment [**Lab 5**] exploring the physiology of the toad heart using ECG and a force transducer.
- Write the [**Prelab**] in your lab notebook.
- Do Quiz 4 on Laulima (open 24 hrs before lab).

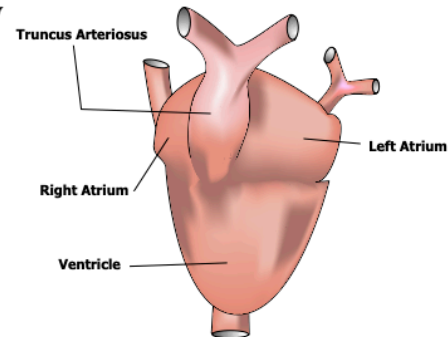
## In Lab:

- Lab 5 manual [**pdf**] [**docx**]. Record data in your lab notebook. Use the guidance at the end of the lab manual to analyze your data in preparation for your results and discussion.
- Dissection guide [**pdf**]
- Toad heart anatomy. Note that amphibians have a 3-chambered heart! Two atria and one ventricle. [**pdf**]

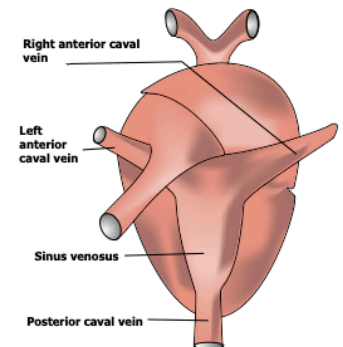


## External Anatomy of the Frog Heart

### Ventral View



### Dorsal View



### After Lab:

- Individual Work Sheet due next week [\[pdf\]](#) [\[docx\]](#)
- You will include hypotheses (sections 1 and 2), mini results (section 3), and a regular discussion. On this lab WS, put a little more effort into the discussion. For each section we ask for, always follow the content guidelines: [\[grading guidelines\]](#) [\[old style\]](#)
- You are encouraged to analyze data with your lab members, and may develop figures together, but all writing must be your own work.